





**MECHATRONIK**  
*AUSTRIA GMBH*

The logo features a stylized 'MA' monogram in white, followed by a vertical line separator. To the right of the line, the word 'MECHATRONIK' is written in a bold, uppercase, sans-serif font, and 'AUSTRIA GMBH' is written below it in a smaller, italicized, uppercase, sans-serif font. The entire logo is centered over a dark blue background with a faint grid and a red, irregularly shaped area containing white speckles.

**TÜV**  
AUSTRIA

ZERTIFIZIERT  
EN ISO 9001  
ZERTIFIKAT NR. 20100193005364

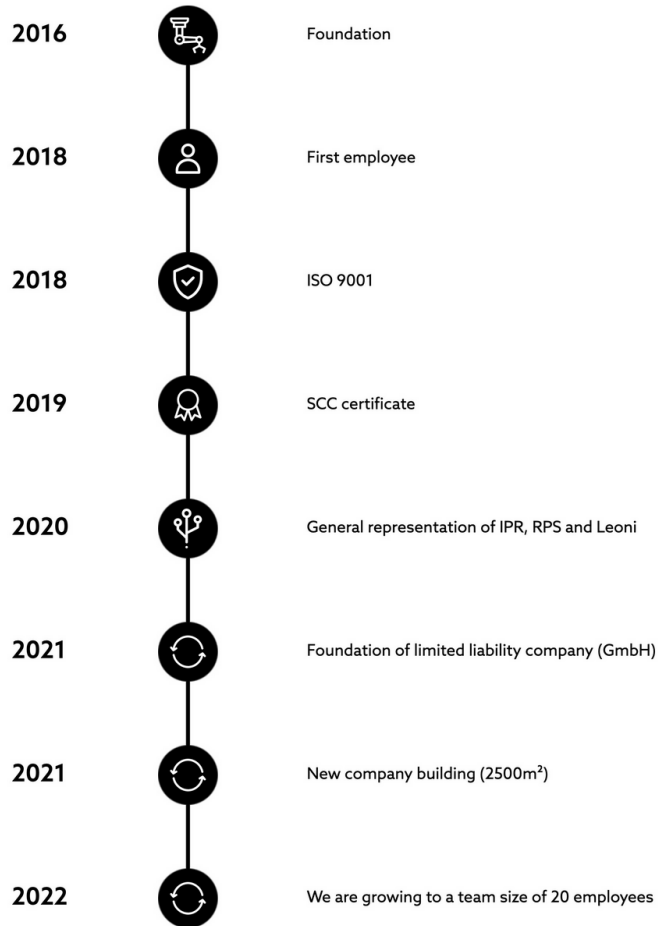
“

## We develop, digitize & provide safety

- Established in April 2016
- ISO 9001 & SCC certified
- 23 employees
- MECHATRONIK AUSTRIA is an independent technical office and software/robotics business focussing on:

- ✓ Testing
- ✓ Software development
- ✓ Hardware for robots







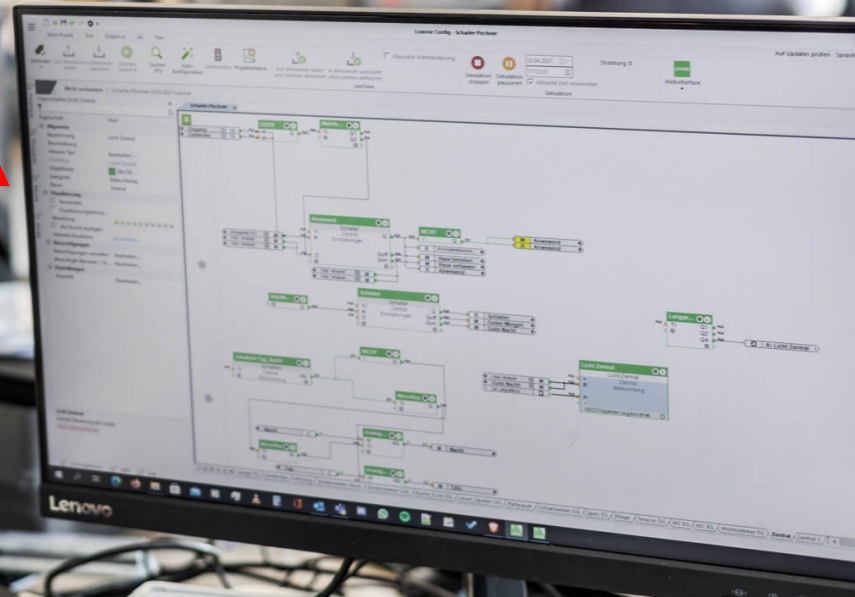
**01** | SOFTWARE DEVELOPMENT

**02** | TESTING

**03** | HARDWARE FOR  
ROBOTS

# 01 SOFTWARE DEVELOPMENT

- ✓ SPS Programming
- ✓ High-level Language Development
- ✓ Robotics
- ✓ AI/ Deep Learning





# SPS PROGRAMMING

- Siemens, Beckhoff
- Safety solutions
- Customer-oriented user interfaces
- Cross-manufacturer communication of different controllers
- Analysis and optimization of existing facilities
- Process visualization
- Drive technology
- Consultation and inspection for the purchase of existing facilities



# ROBOTICS

- Concepts and virtual tests
- Programming of various solutions
- Vision processes (eg. for partial recognition, pallet measurement)
- Analysis and optimization of existing programmes
- TCP- measurement for robots from all manufacturers
- Consultation and inspection for the purchase of existing facilities



# HIGH-LEVEL LANGUAGES

- Diverse programming languages
  - Python, C#, Delphi, C/C++
- SQL- and NoSQL-data connection
  - PostgreSQL, MySQL, Microsoft SQL, Oracle, MongoDB, CouchDB
- Connection of various interfaces
  - ProfiNet/ProfiBus, ModBus, CAN, REST, gRPC, TCP/IP
- Deep learning in the fields of picture recognition and time series analysis



# 02 TESTING

- ✓ Technical Documentation
- ✓ Risk Analysis
- ✓ Periodic Inspections
- ✓ CE Declarations of Conformity
- ✓ Expert Opinions and Reports
- ✓ Safety Management





## PERIODIC INSPECTIONS

**Electrical installations and equipment**

**Lightning protection systems**

**Emergency lighting**

**Power-operated doors and gates**

**Machines for lifting loads**

**Fall protection systems**

**Holding and fall arrest harnesses**

**Safety helmets**



**MA** | MECHATRONIK  
AUSTRIA GMBH

WE INSPECT FOR YOUR SAFETY

## EU DECLARATION OF CONFORMITY

We create **the CE marking** of your product,  
machine or installation in compliance with all  
standards and directives

**CE**



WE INSPECT FOR YOUR SAFETY

## SAFETY MANAGEMENT

**We protect people and machines.**

**We keep track of everything for you.**

**We support you in development.**

**We optimize processes for you.**

**We are reliable.**



## SAFETY MANAGEMENT

This also requires **calculations & simulations.**

These are carried out for you with our know-how and the support of the most modern technology.

# PRÜFBUCH KRÄNE / HEBEZEUGE

Prüfungsnummer	<input type="text"/>
Art des Hebezeugs	<input type="text"/>
Ort	<input type="text"/>
Bez. / Nr. im Betrieb	<input type="text"/>

Der Gesetzgeber sieht vor dieses Dokument an der Betriebsstätte aufzubewahren.  
Liegen die geprüften Geräte außerhalb der Betriebsstätte, so ist das Dokument am Einsatzort oder dem Gerät selbst aufzubewahren.

ÖNORM M 9602  
VERS. 01/2022

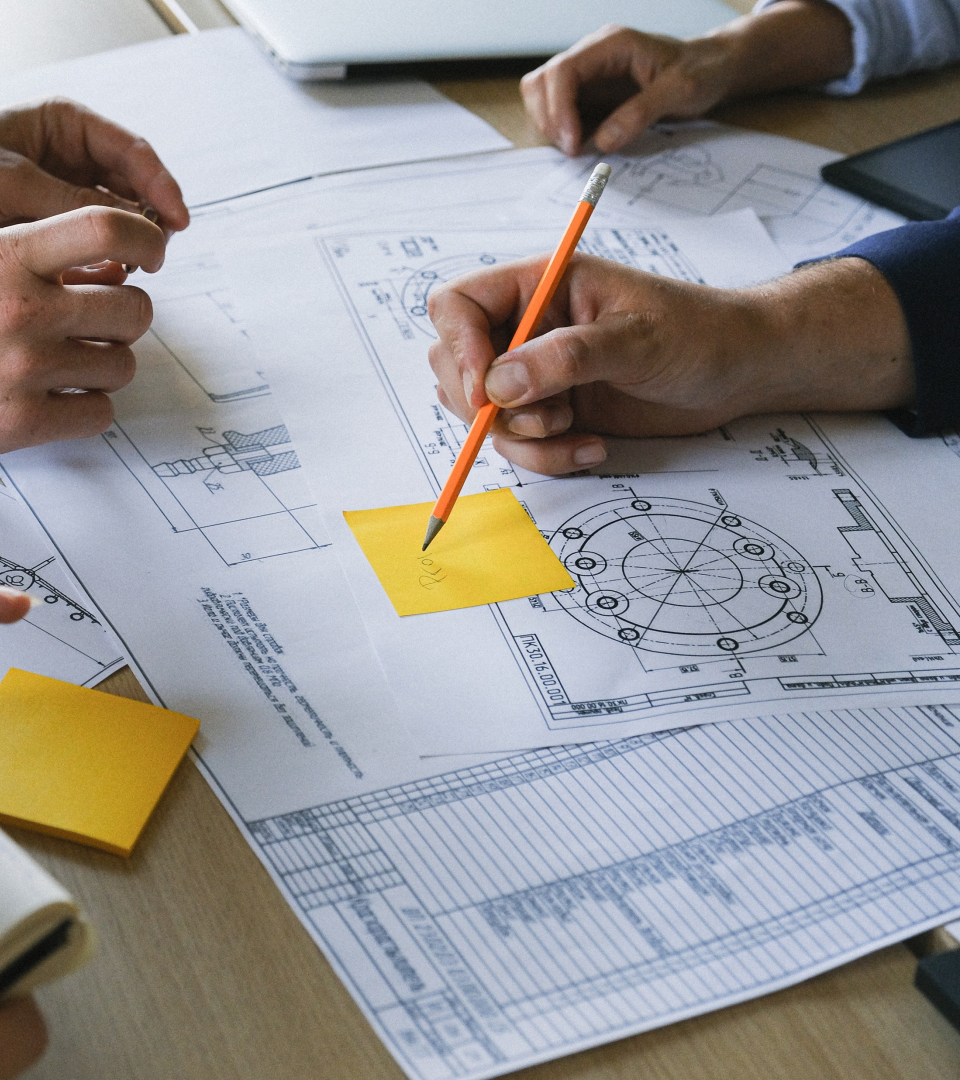


## TECHNICAL DOCUMENTATION

Technical documentation is a very **important part** of a product, machine or installation.

This makes **installation, usage, maintenance** or **repair** significantly easier.

It includes all **documents** and **information** which describe the product in detail and explain its use and operation.



**MA** | MECHATRONIK  
AUSTRIA GMBH

WE INSPECT FOR YOUR SAFETY

## EXPERT OPINIONS AND REPORTS

By sworn **experts**

In the fields of **machinery-** and  
**plant engineering.**

in Kooperation mit:

ZT-CONSULTING   
ZIMMERMANN





**BizLink**

**IPR**  
INTELLIGENT  
PERIPHERIEN FÜR ROBOTER

**RpS**  
Robot Protection Systems

# 03

## HARDWARE FOR ROBOTS FROM ONE PROVIDER

**EXCLUSIVE DISTRIBUTION PARTNER | RPS, IPR AND BIZLINK**



# COMPANY PRESENTATION RPS GmbH



Tailor-made **robot protective suits**  
for all applications

01

## FOOD

High-pressure resistant,  
dirt repellent, easy to  
clean surface

02

## HEAT PROTECTION

Temperature resistant up  
to 1200 °C

03

## SANDBLASTING

Highly resistant to  
blasting with corundum,  
steel balls, sand

04

## CLEAN ROOM

Meets requirements  
according to Norm FDA 21  
CFR Kap.1 and EGV  
1935/04

05

## HOSE PROTECTION

No need to disconnect  
cables. Quick change  
intervals

06

## GRIPPER PROTECTION

High flexibility, long-  
life, special adaptation



# 01/04

## FOOD / CLEAN ROOM



### MEETS THE REQUIREMENTS

according to Norm FDA 21 CFR Kap.1 and EGV 1935/04



### RESISTANT TO

all cleaning products known to us



### FURTHER BENEFITS

high-pressure resistant, dirt -repellent, easy to clean surface



# 02

## HEAT PROTECTION



### **RPS TG18**

heat-resistant up to 450 °C with direct contact



### **RPS TG09**

heat-resistant up to 500 °C, dirt-repellent, resistant to separating agents



### **RPS TG50**

temperature-resistant up to 1200 °C



# 03

## SANDBLASTING



**SPECIAL RUBBER**



**HIGHLY RESISTANT TO BLASTING**  
with corundum, steel balls, grey cast iron,  
sand



**COLD-VULCANIZED SEAMS**  
therefore no penetration by media  
possible



**HIGHLY ABRASION RESISTANT**



**EXTREMELY FLEXIBLE**



# 05

## HOSE PROTECTION



**PROTECTION POSSIBLE FOR ALL AREAS**



**NO NEED TO DISCONNECT CABLES**



**QUICK CHANGE INTERVALS**  
due to different closures



# 06

## GRIPPER PROTECTION



HIGHLY FLEXIBLE



LONG-LIFE



SPECIAL ADAPTATION



# BizLink

**MA** | MECHATRONIK  
AUSTRIA GMBH

## COMPANY PRESENTATION BizLink Factory Automation

Standardized cables, special cables  
and assembled systems as well as intelligent  
products and smart services



---

**01** ENERGY SUPPLY  
SYSTEMS

**04**

TOP PRODUCT  
GROUPS

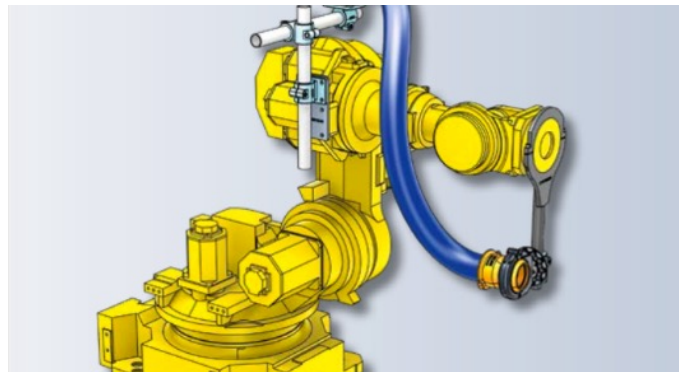
LSH3 6 // LSC 7 // B-FLEX B //  
Special Solutions

**02** HOSE PACKAGES

**03**

SENSORS &  
IMAGING



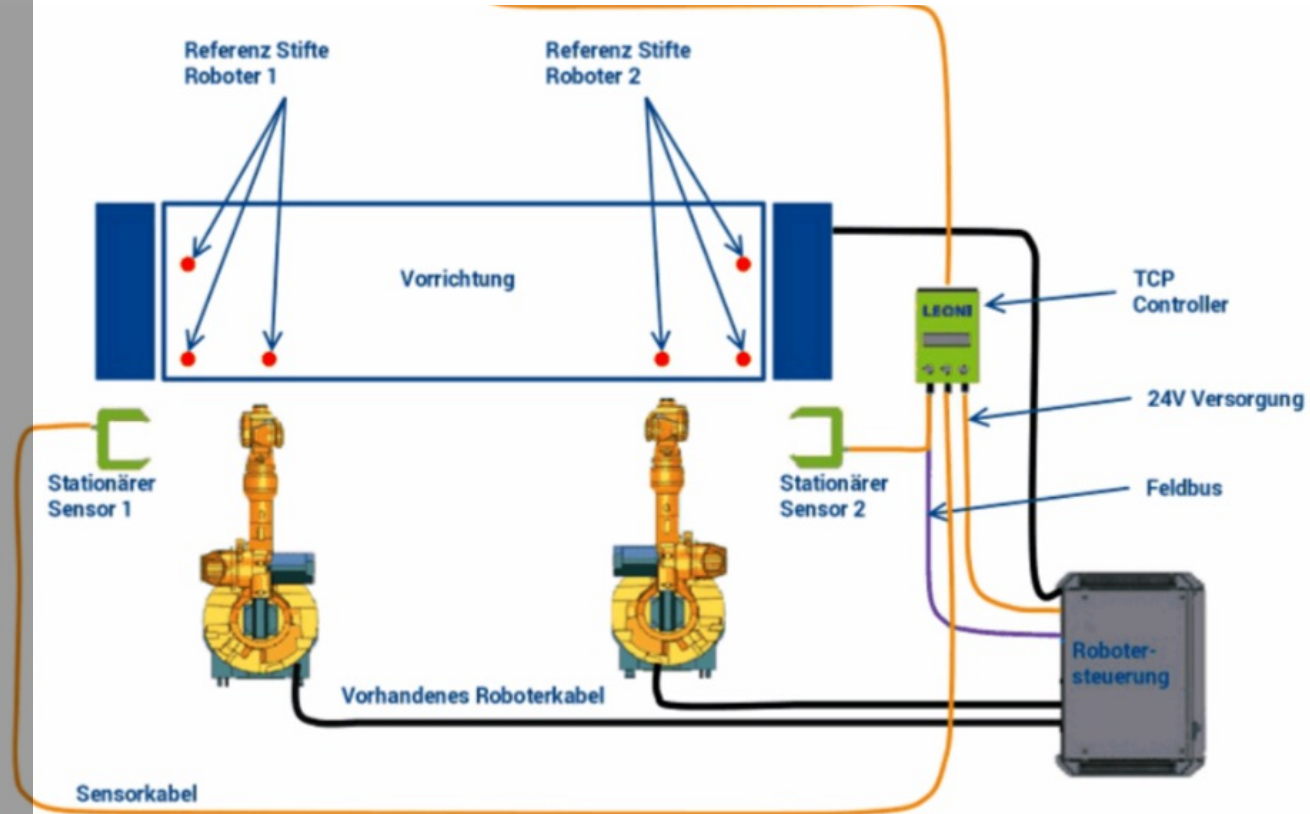


BizLink Factory  
Automation  
**PRODUCT GROUPS**

# SENSORS & IMAGE PROCESSING

- ✓ **uncomplicated**
- ✓ reduction of robot programming effort to a minimum
- ✓ fast assembly
- ✓ simple **commissioning**
- ✓ continuous **logging of measurement data**
- ✓ no need for additional PCs

Example: Integration of advintec TCP-3D into the production line

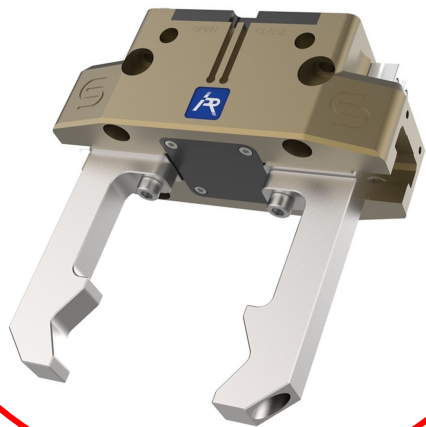




## COMPANY PRESENTATION

# IPR - Intelligente Peripherien für Roboter GmbH

Industry-specific solutions for robot applications and automation solutions



**01 GRIPPER**  
Reliable gripping of  
components

**02 COMPLIANCE &  
COMPENSATION  
SYSTEMS**  
Reliable compensation of  
tolerances

**03 COLLISION PROTECTION  
SYSTEMS**  
Reliable detection of collisions

**04 7th AXIS**  
IPR has the right 7th axis  
solution for every  
application

**05 TOOL CHANGER**  
Fast and safe changing of  
tools on the robot or gantry

## Unsere Lösungen für Sie

### Kompetenz in End-of-Arm-Tooling



#### Füge- & Ausgleichseinheiten

Ausgleich von Positionsfehlern  
in x-y-Richtung (sowie einen  
Winkelausgleich)  
Ausgleich von Differenzen in  
z-Richtung



#### Kollisionsschutz

Kollisionsschutzsystem zur Verhinderung  
von Schäden bei Überlastung und Kollision  
(optional mit interner Kabelführung)



#### Werkzeugwechsler

Schnelles Wechseln von Werkzeugen  
und Greifern am Roboter oder Portal  
Einfache Montage  
Hohe Flexibilität durch kurze  
Wechselzeiten



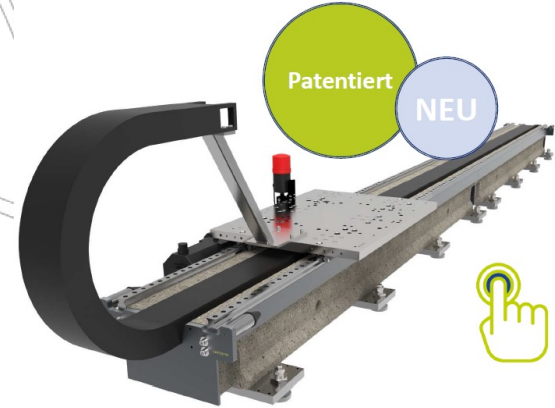
#### Greifer

Kompakte Ausführung  
Sehr robuster Aufbau  
Greifkrafterhaltung über Feder (optional)



#### Fahrachsen

Modulares System  
Hohe Wiederholgenauigkeit  
Extreme Belastbarkeit  
Lange Lebensdauer



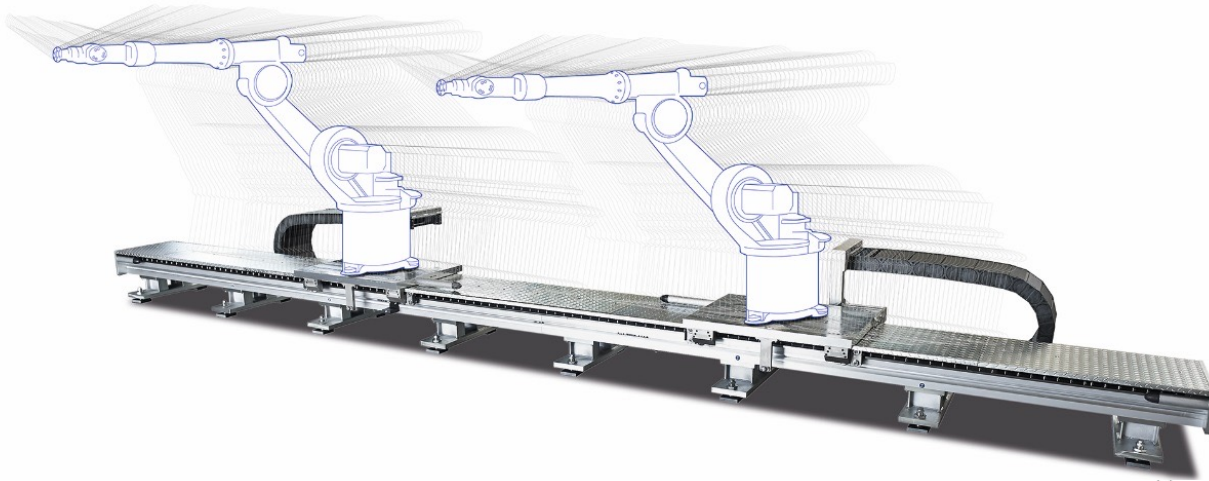
Innovative components and customized products

# HIGH PRECISION SYSTEMS

Innovative components and customized products

# Simple.Robust.Flexible.

FOR LOADS FROM  
20 TO 12.000 KG



- ▶ **Extendibility** easily possible if required (extension and additional trolley)
- ▶ **Modular design** - flexible and perfectly adaptable to customer needs
- ▶ Highest **precision**
- ▶ **Space saving**
- ▶ Fully **accessible**

## 7th AXIS IN ALUMINIUM AND STAHL



## Hybrid Axis IP350-BH



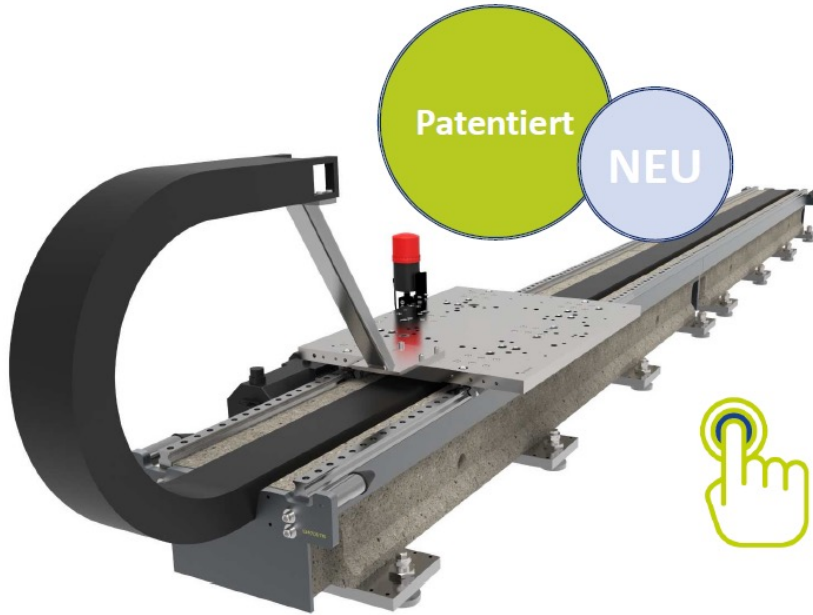
## Carriage Axis





Innovative components and customized products

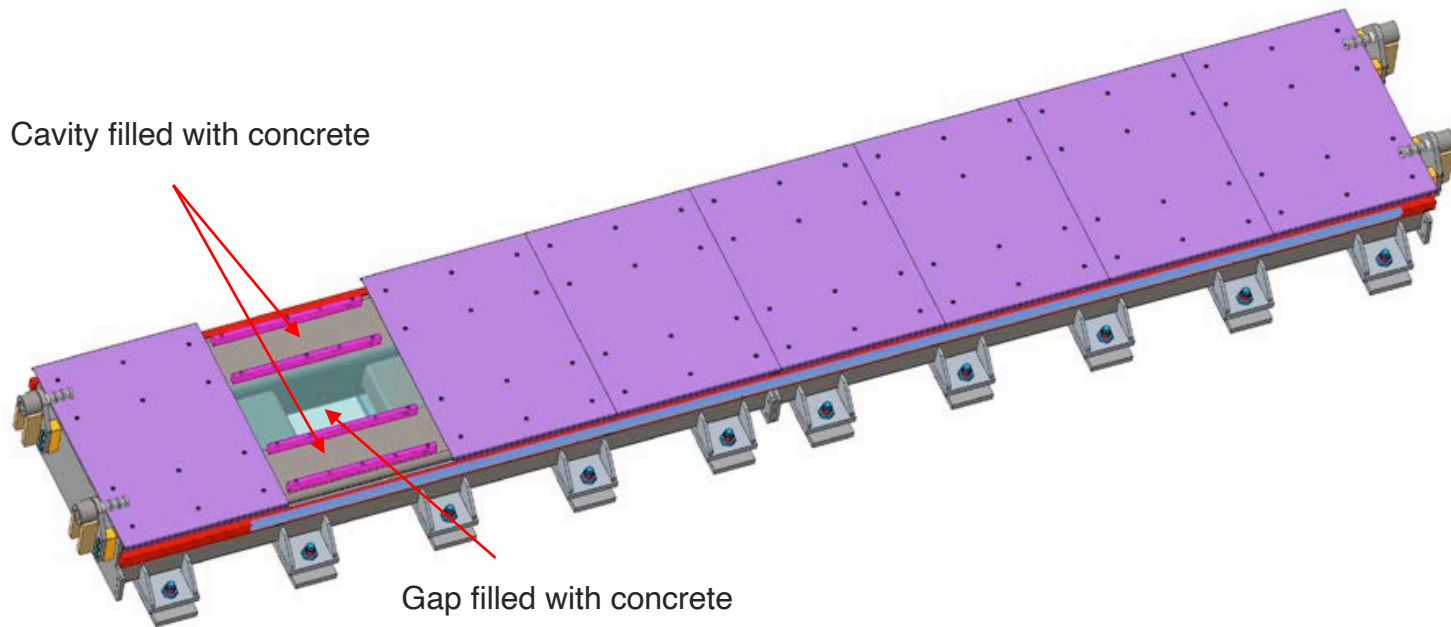
**WORLD'S FIRST**



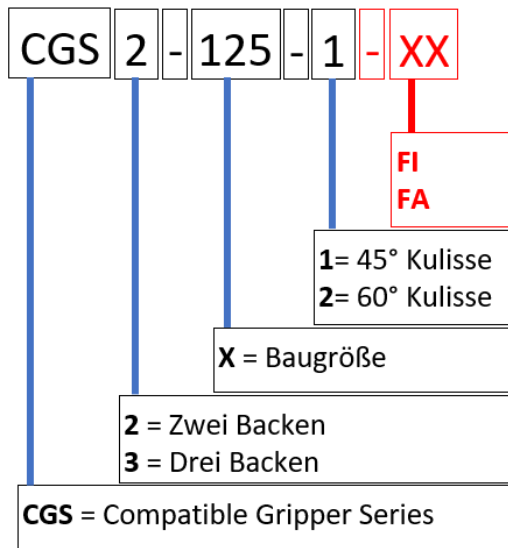
- ▶ **The first 7th axis from composite concrete**
- ▶ **Torsion resistant**
- ▶ **Low vibration**
- ▶ **Quiet**
- ▶ **4 variants for 95% of robots**
- ▶ **Good environmental footprint**

Innovative components and customized products

# The best of both worlds



# PARALLEL GRIPPER SERIES CGS2



FI – Retention of gripping force internal gripping  
FA – Retention of gripping force external gripping



## ADVANTAGES

1:1 interchangeable with the benchmark through:

- ▶ wide range of sizes
- ▶ precise and reliable use
- ▶ handling weights up to 95 kg
- ▶ maximum gripping forces

# TOOL CHANGERS TK-SERIES

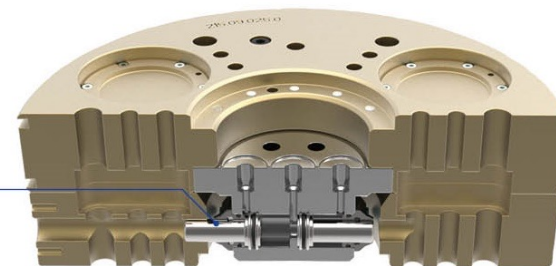
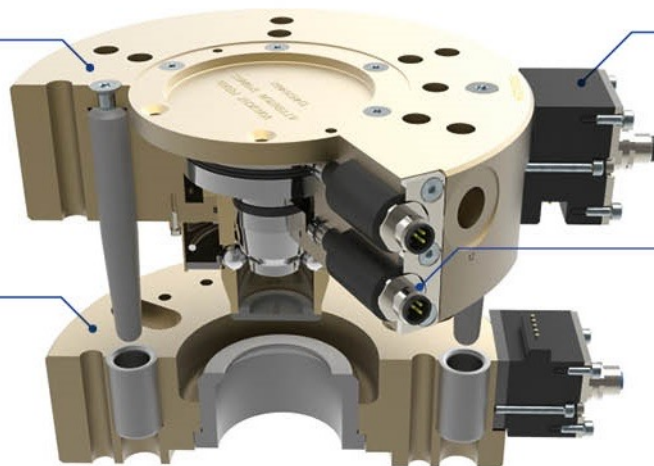
Roboterseite  
mit Verriegelungssatz  
und Zentrierstiften

Optionale Steckerleisten

Werkzeugseite mit  
Verriegelungs- und  
Zentrierbuchsen

Optionale Kolbenabfrage

Doppelte Sicherheitsverriegelung



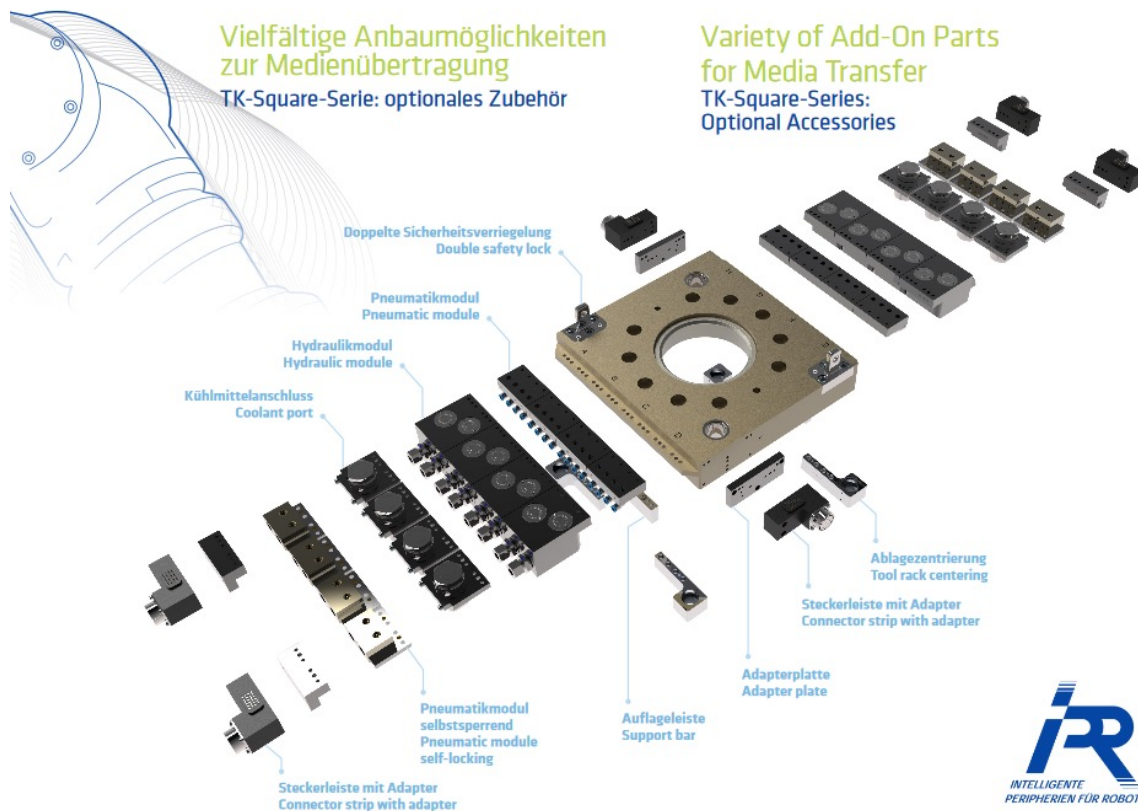
# TOOL CHANGER TK-SERIES

Vielfältige Anbaumöglichkeiten  
zur Medienübertragung

TK-Square-Serie: optionales Zubehör

Variety of Add-On Parts  
for Media Transfer

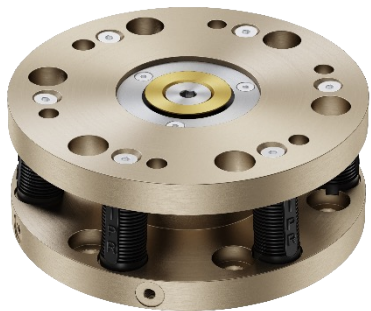
TK-Square-Series:  
Optional Accessories



## ADVANTAGES

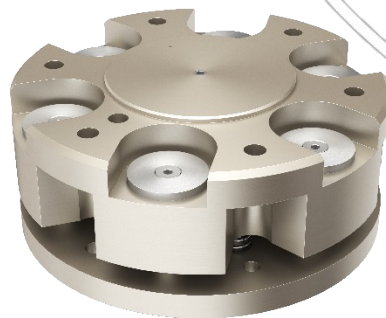
- ▶ Safe, redundant locking in the event of a power failure
- ▶ Quick change of tools and grippers on the robot or the gantry
- ▶ Simple assembly
- ▶ High flexibility due to short changeover times
- ▶ High availability and long service life due to perfectly matched assemblies

# COMPLIANCE AND COMPENSATION SYSTEMS



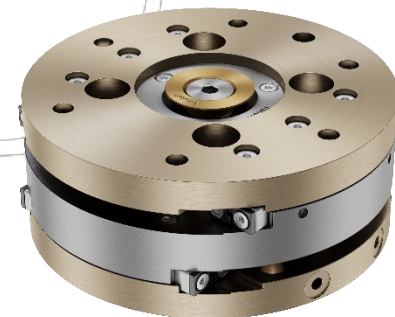
## COMPLIANCE WRISTS

- ▶ Compensation of position errors in the x/y-direction up to +/- 3 mm as well as angle compensation up to 2°



## Z-AXIS COMPLIANCE

- ▶ Scanning of heights and compensation of differences in the z-direction up to 12 mm



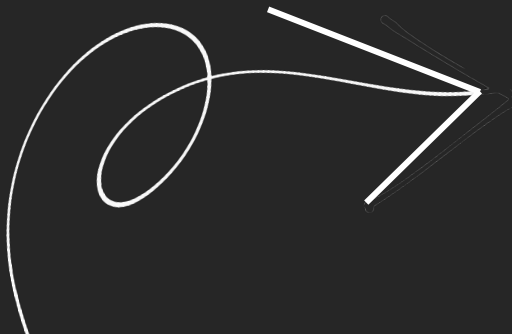
## FORCE-FREE COMPENSATING ELEMENTS

- ▶ Compensation of position errors in the x/y- direction of up to +/- 25 mm

# MA | MECHATRONIK AUSTRIA GMBH

WE **DEVELOP**, WE **DIGITIZE**, WE PROVIDE **SAFETY**.

---



**SCAN QR CODE NOW**  
MECHATRONIK-AUSTRIA.AT